

How to install a floating license for MyCAD Program

1. Introduction

This document describes how to install a floating license in a license server and client PC. It was made out on the assumption that MyCAD Program has been installed in the MyCADPro folder(**C:\WMyCADPro**) and the IP address of a license server PC is "**211.104.26.32**"

2. Save a license file

Modify the name of the license file into "license.dat" and save in the data folder(**C:\WMyCADPro\Data\license.data**), If there is a existing license file, delete it and save new license file in the data folder.

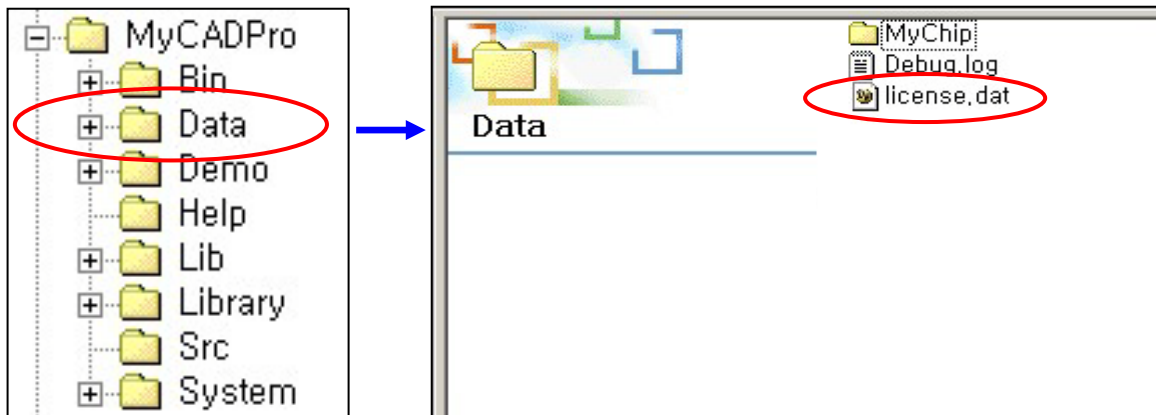


Figure 1. Saving the license file

3. Modify the license file

Modify the content of the license file with text editor such as note pad. Replace "**yourhost**" into the IP address of license server PC and save the license file.

```
3 #Issuer : Henry
4 #Issue Date : 2005/4/20
5
6 SERVER yourhost 000cf1f5ef07 27009
7 VENDOR mycad
8 USE_SERVER
9 FEATURE LayEdPro mycad 2004 30-apr-2006 1 SIGN=15CF091254D0
10 FEATURE CifGdsPro mycad 2004 30-apr-2006 1 SIGN=9D03E2EA586E
11 FEATURE MyDRCPPro mycad 2004 30-apr-2006 1 SIGN=B5CD057CDA00
```



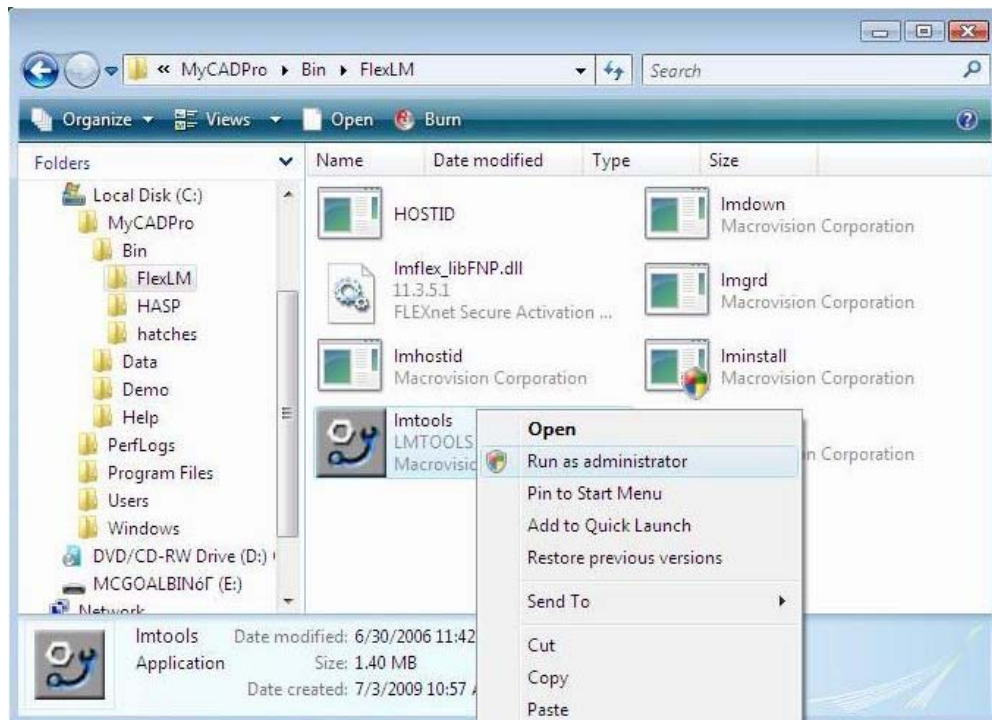
```
3 #Issuer : Henry
4 #Issue Date : 2005/4/20
5
6 SERVER 211.104.26.32 000cf1f5ef07 27009
7 VENDOR mycad
8 USE_SERVER
9 FEATURE LayEdPro mycad 2004 30-apr-2006 1 SIGN=15CF091254D0
10 FEATURE CifGdsPro mycad 2004 30-apr-2006 1 SIGN=9D03E2EA586E
11 FEATURE MyDRCPPro mycad 2004 30-apr-2006 1 SIGN=B5CD057CDA00
```

Figure 2. Modifying a license file

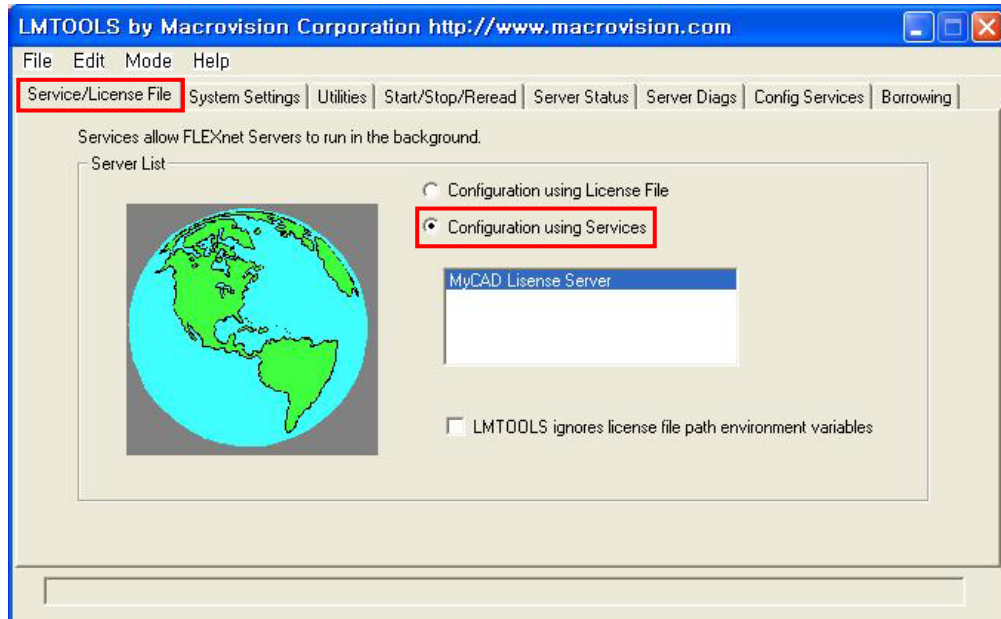
4. LMTOOLS Configuration

Execute "Imtools.exe" (C:\MyCADPro\Bin\Imtools.exe) and setting it as follows (If there is not "Imtools.exe" file, download the latest MyCAD Program in [our website](#).)

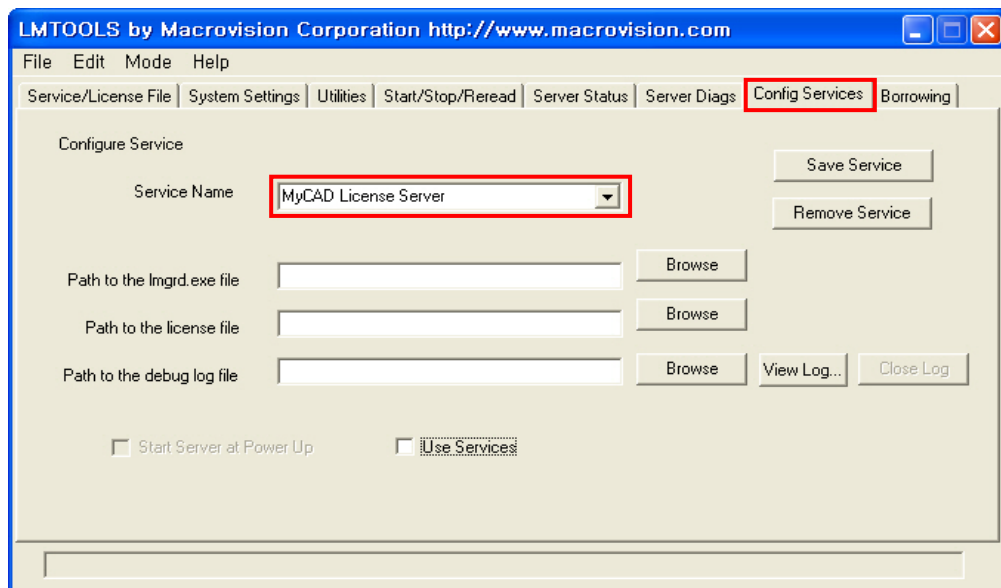
- (1) If User OS type is Windows Vista or 7, The right button on a mouse should be clicked when user executes "Imtools.exe" and then "run as administrator" like below picture.



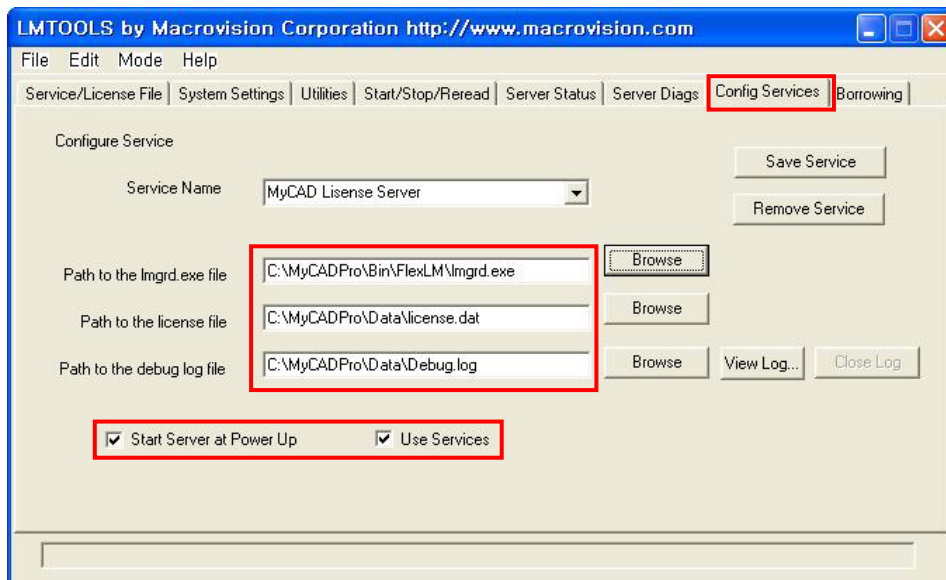
(2) In **Service/License File** tab, choose "Configuration using Services".



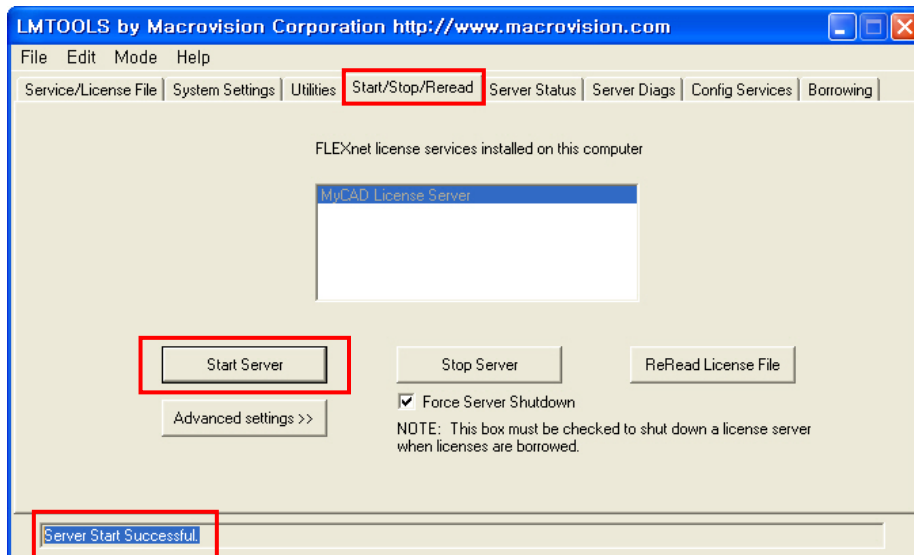
(3) In **Config Services** tab, input "MyCAD License Server" into **Service Name** part.



- (4) In **Config Services** tab, specify the file path of lmgrd.exe, license.dat and Debug.log. And check **Use Services** and **Start Server at Power Up**.
If there is not Debug.log file, create new one with text editor in data folder (**CWMyCADProDataWDebug.log**). After finishing the configuration, click **Save Service** button.



- (5) In **Start/Stop/Reread** tab, click **Start Server** button. If the configuration is correct, "Server Start Successful" message will appear in the below part of the dialog.



5. Execute MyCAD program

Execute MyCAD program. If the installation of license is right, the program will be executed correctly.

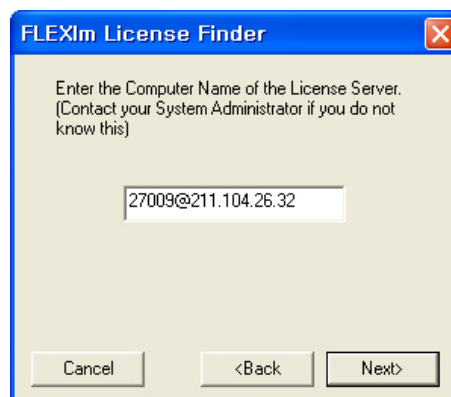
6. Install the license in a Client PC

- (1) Execute MyCAD program after install program in client PC. And popup FLEXlm License Finder as below.



- (2) "Next" button click after select Specify the License Server

- (3) Input 27009@IP (IP of server PC or server's name) in message window (for example: IP-211.104.26.32)



(4) Confirmation success message after "Next" button click

